

# BURMA

## The Nats (Spirits) of Myanmar

This 16-day itinerary is a superlative journey of Myanmar, fitting in the highlights of Myanmar done in unexpected luxury. Combining cruises down the Mingun and Sagaing Rivers, travelling through Yangon on an exquisitely restored vintage bus, re-visiting Myanmar's heritage through its



ancient silk weaves, trekking up Mount Popa and visiting the little-visited area of Putao that is the Burmese Himalayas, this tour reveals Myanmar in a manner quite unlike any other.

### DAY 1-3 YANGON/MANDALAY

Arrival in Yangon, sunset visit to Shwedagon Pagoda. You'll be based in the Royal Bungalow of Kandawgyi Palace- with stunning views of the lake and a stately jacuzzi. Prepare for your flight to Mandalay the next day, visiting the ancient royal city of Amarapura the Mahamuni Pagoda, Hill and Palace reaching U Pein Bridge by sunset. Tonight you'll be based at the luxurious Mandalay Hill Resort.



### DAY 3-5 CRUISE MANDALAY/SAGAING/ BAGAN

Check-in for RV Pandaw Cruise at noon. Sailing upstream to Mingun, there will be a short stopover. The next day will see you going downstream to Sagaing, waking up to sunrise on Sagaing Hill. By late morning, you'll be continuing further downstream to Bagan with a short stop at Yandapo, a pot

Calling ourselves 'travel mixologists', we've served up interesting itineraries for you to choose from- all of which are available for tweaking and embellishments whilst keeping the main ingredients. Beautifully-themed journeys for you to choose from and to tweak according to your predilections.

# URBANE NOMADS

## URBANE NOMADS

making village, late afternoon. Arriving in Bagan the next day, you will arrive at Bagan Aye Yar Jetty. Spend sunset at one of the famous pagodas in Bagan, spending the night at Aureum Palace Hotel in Bagan, a hotel with stunning views of Bagan.

### DAY 5-6

### BAGAN

The next day you'll tour Bagan complex by horsecart and then get an aerial view of Bagan on a hot air balloon.



### DAY 6-8

### MOUNT POPA

Transfer from Bagan to Mount Popa. Mount Popa is reputedly the place where the nats, or spirits, reside. You'll be able to find the figurines of nats in Bagan- the craftmaking centre of Myanmar. Temples in Myanmar are built in the highest places physically possible and the monastery on Mount Popa is no exception (as you'll discover during the challenging climb on the second day). You

will be based at the Mount Popa Resort Hotel.

### DAY 9-11

### INLE LAKE

Transfer back to Bagan today for your flight to Inle Lake, the land of the iconic leg rowers. Azure blue lakes (views of which you can enjoy over lunch or whilst having a spa treatment) and communities of villagers living on these lakes with children probably learning how to row before they do walking. On arrival, you'll be transferred by boat, visiting Pindaya cave en route. The next day you'll enjoy a tranquil boat ride around the lake- witnessing how the people of Inle Lake live, the floating gardens that are also a means of subsistence to the communities

## URBANE NOMADS



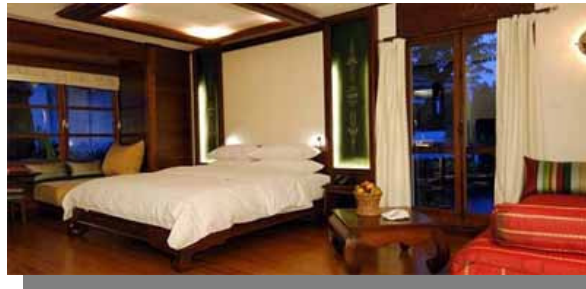
and, if you like, try a hand or literal leg, at rowing the boat.

### DAY 1 1

### YANGON

Flight to Yangon. Staying one night at the Governor's Residence in Yangon. Burmese silks are amongst the most exquisite. In the bazaar today, you'll be able to find a shop selling antique Burmese weaves that harken back to the period of royalty. Stunning antique collections are also on offer. You could opt to be transferred by a luxury

vintage bus with an optional dinner in a beautiful colonial restaurant run serving French cuisine.



### DAY 12-15

### PUTAO

Putao, a veritable paradise is in the Burmese Himalayas, possibly the part of the Himalayas least visited by tourists. With a stunning landscape combining the lush tropical forests of Myanmar and cool Himalayan climes and mountainscapes.

Putao is also home to a stunning biodiversity of flora and fauna. You'll be staying at a resort designed by Jean Michel Gathy-unexpected luxury given the locality. After a quick lunch you'll be transferred to your elephant for a ride through terraced rice fields and down the banks of the Nam Lang river, which you'll be rafting the next day. Dinner and drinks are served at the communal lodge, with a warm fire blazing. Today, go on a gentle rafting trip down Nam Lang and Malikha River with a spectacular picnic lunch on an isolated strip of beach. Dinner is once again at the main lodge. The last day at Malikha Lodge is spent visiting the villages. Early risers get to visit the local market, followed by an after-lunch trek. A

spa treatment awaits weary trekkers in their individual bungalows on their return. The next day, have a leisurely breakfast before being transferred to the airport for your flight back to Yangon.

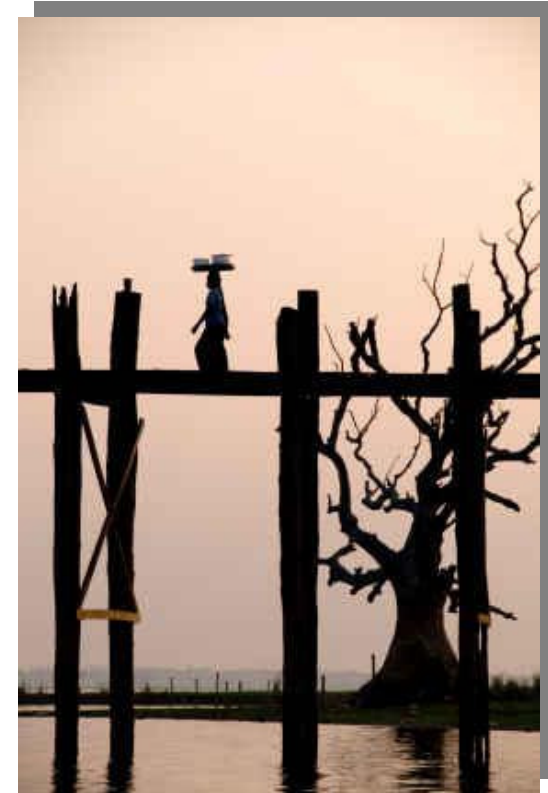
Yangon/End One night in Yangon at leisure, transferring back to the airport for your international flight back.



## OPTIONS

This trip can be combined with South East Asia. Yangon similarly has good flight connections with India and those looking for a spiritual pilgrimage can opt for a customized itinerary that twins spending time with the monks in ascetic monasteries deep in the Burmese forests with a pilgrimage in Varanasi. Myanmar has such a diverse culture and is home to many different tribes. Urbane Nomads can arrange for guests to visit the tattooed people of Southern Myanmar in their villages, driving through roads only recently opened up and where few foreigners or locals had crossed through accompanied by guides with an excellent rapport with the villagers.

## URBANE NOMADS



<b>Date</b>	<b>Nts.</b>	<b>Location/Route</b>	<b>Accommodation/ Details</b>	<b>Rooms/Travel Time/Basis</b>
		Name of the airport	<b>Arriving Flight &amp; Time TBA</b>	type of room plus meals (B,L,D)
Day 1-3		Yangon/ Mandalay		
	Night 1	Yangon	Royal Bungalow of Kandawgyi Palace	
	Night 2	Mandalay	Mandalay Hill Resort	
Day 3-5		Cruise Mandalay, Sagaing, Bagan		B,L,D
	Night 3		Luxury boat	B,L,D
	Night 4		Luxury boat	B,L,D
	Night 5		Aureum Palace Hotel	
Day 5-6		Bagan	Aureum Palace Hotel	
Day 6-8		Mount Popa	Mount Popa Resort	
Day 9-11		Inle Lake	Inle Lake View	
	Night 11	Yangon	Governor's Residence	
Day 12-15		Putao	Malikha Lodge	
			<b><u>Departing Flight &amp; Time TBA</u></b>	

## **Total Price (Indicative Only):**

Royal Bungalow, Kandawgyi-USD7920pp

Governor's Room, Governor's Residence-USD7380pp

Deluxe Room, Strand Hotel-USD7685pp

All rates are on a per person basis based on double occupancy.

Please enquire for single supplements.

### **Price includes:**

All domestic, flights, transfers and tours mentioned. All accommodations and meals specified.

### **Price excludes:**

All gratuities and tips, tours not mentioned and items of a personal nature. International flights (Please inform us of your preferred departure airport)

## **Important Notes**

### **Trip Grading/Difficulty:**

This itinerary is done at a relaxed pace, with no strenuous or overtly physical activities and is suitable for all ages.

### **Flights**

It is essential that you give us your air schedule at least 60 days prior to departure, so that we may confirm your arrival and departure hotels.

### **Health**

You are strongly advised to contact your own GP or vaccination centre in respect of required vaccinations for Burma. Check on recommended immunizations as least a month before travel. Among the items you might pack are: sun creams (factor 12 and above), insect repellent, sting relief cream, antiseptic cream, a lightweight hat and sunglasses.

### **Important Note**

While we endeavor to make the itinerary as accurate as possible, it should be considered an approximate schedule of activities rather than a rigid schedule of events. Trip itineraries are subject to revision due to weather, road and trail conditions, government restrictions and other factors beyond our control.

## **Booking Conditions:**

### **Booking your tailor-made holiday**

A booking is accepted only after we receive the completed signed booking form and/or the non-refundable deposit required. If the booking is made within 60 days of departure, then full payment is required at the time of confirmation except over the Christmas & New Year period when the full itinerary amount must be made at the time of booking. The balance of payment due for your travel arrangements must be paid by you not later than 60 days before departure; otherwise we may treat the booking as cancelled.

### **Methods of payment**

Payments for deposits and final monies for Travel Arrangements may be made by bank transfer.

### **Cancellation**

All cancellations must be advised in writing and will take effect the day we receive it. Urbane Nomads refunds all recoverable costs after cancellation, subject to third-party cancellation and refund policies and a USD500 administration and travel planning fee.

In some cases hotels require prepayment in full for hotel rooms and services in the peak period. In such cases these deposits are non refundable.

### **Travel Insurance**

It is a condition of booking the Travel Arrangements that You are adequately insured for the full duration of the your travel arrangements in respect of illness, injury, death, loss of baggage and personal items, cancellation and curtailment. The choice of insurer is the sole discretion of You. In signing the Booking Form or paying for your holiday You confirm to Us that You either have or will have procured such insurance before the commencement of Your Travel Arrangements.

Further Terms and Conditions apply. In signing the Booking Form or paying the deposit you confirm to Us that you have accepted the booking terms and conditions.

The Urbane Nomad keenly seeks the best that travel has to offer-keenly seeking out exciting design hotels with its associated mod cons, the most unique travel experiences in localities yet to be discovered by the masses or experiencing a favoured tourist destination on an entirely different level.

**URBANE NOMADS**